


Map 13

Allwedd / Key
 Llinell bresennol y Llwybr Arfordir, Haf 2011
 Current route of Coastal Path, Summer 2011

 Cychwyn/diwedd y cymal
 Start/end point of section

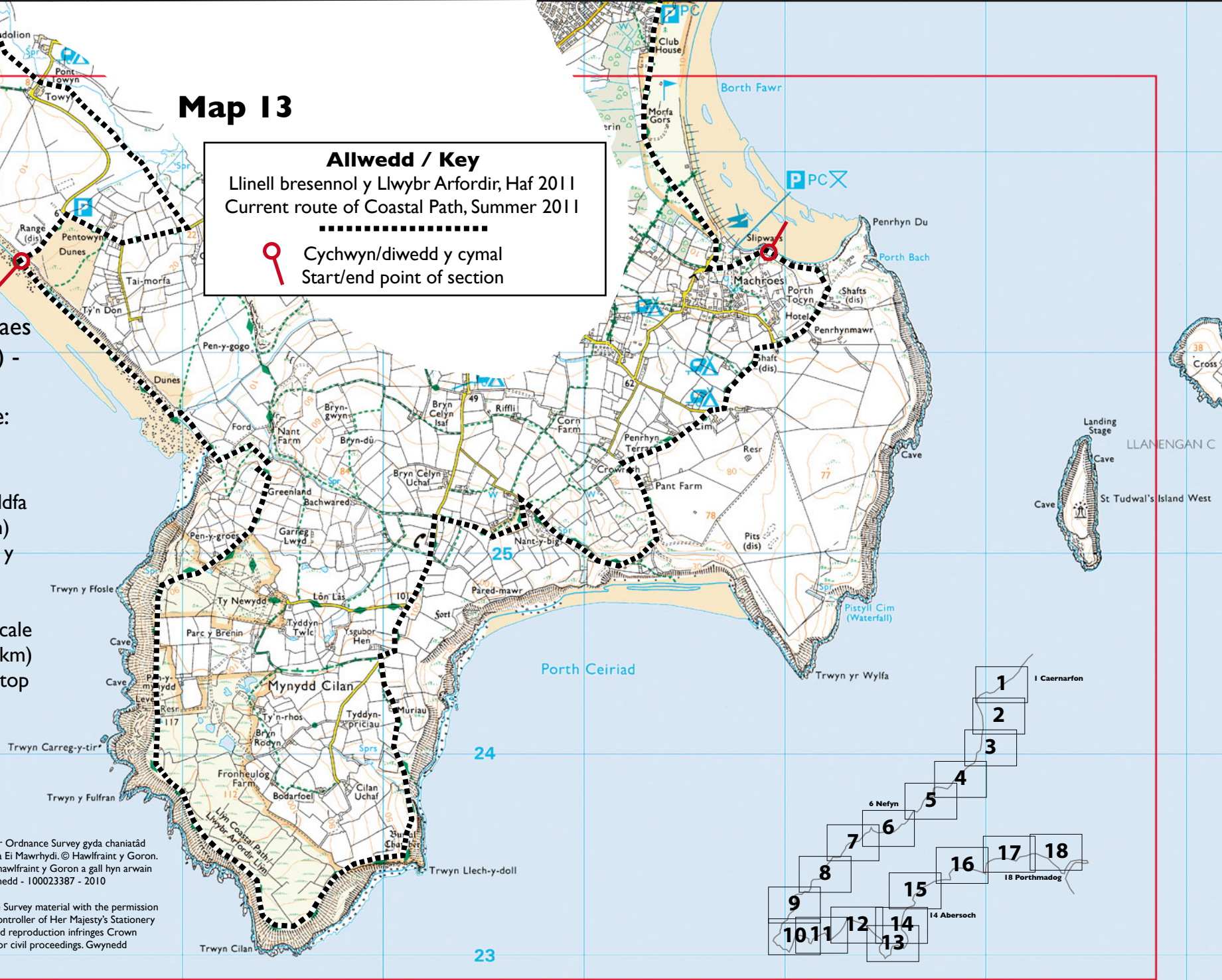
Porth Neigwl (maes parcio / car park) - Machroes
 Pellter / Distance:
 10 km / 6.2 m

Mae'r mapiau ar raddfa 1:25,000 (4cm=1km) gyda gogledd ar frig y dudalen.

The maps are at a scale of 1:25,000 (4cm=1km) and north is to the top of the page.

Atgynhyrchir y map hwn o Ddeunydd yr Ordnance Survey gyda chaniatâd yr Ordnance Survey ran Rheolwr Llyfrfa Ei Mawrhydi. © Hawlfraint y Goron. Mae atgynhyrchu heb ganiatâd yn torri hawlfraint y Goron a gall hyn arwain at erlyniad neu achos sifil. Cyngror Gwynedd - 100023387 - 2010

This map is reproduced from Ordnance Survey material with the permission of Ordnance Survey on behalf of the Controller of Her Majesty's Stationery Office © Crown copyright. Unauthorised reproduction infringes Crown copyright and may lead to prosecution or civil proceedings. Gwynedd Council - 100023387 - 2010



- 1 Caernarfon
- 2
- 3
- 4
- 5
- 6 Nefyn
- 7
- 8
- 9
- 10
- 11
- 12
- 13
- 14 Abersoch
- 15
- 16
- 17
- 18 Porthmadog